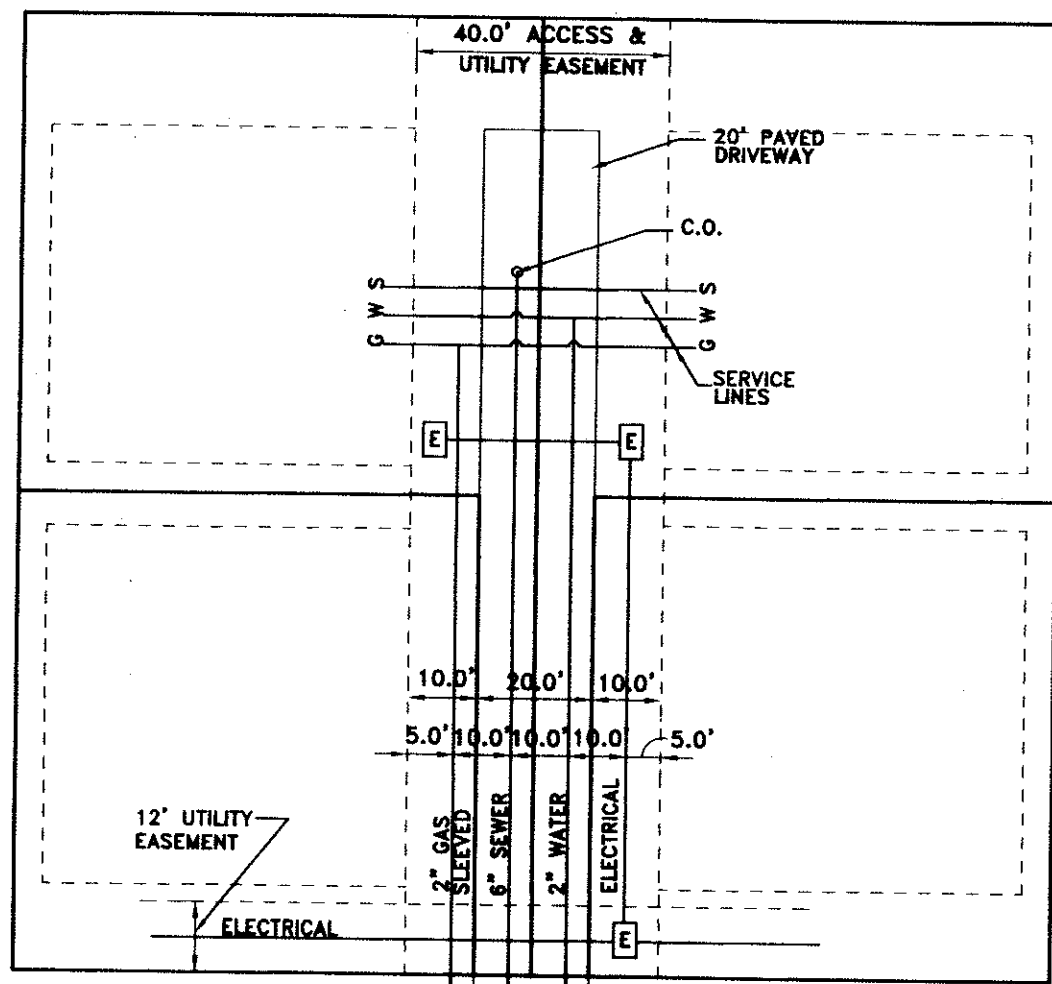
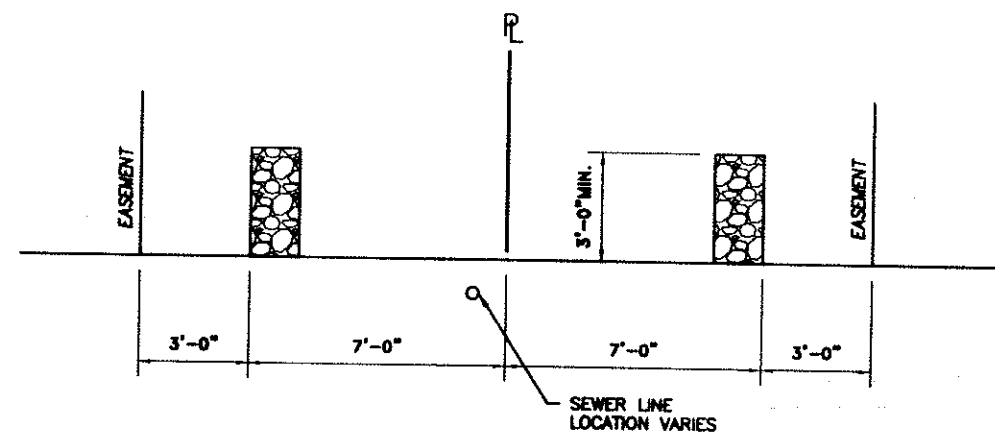


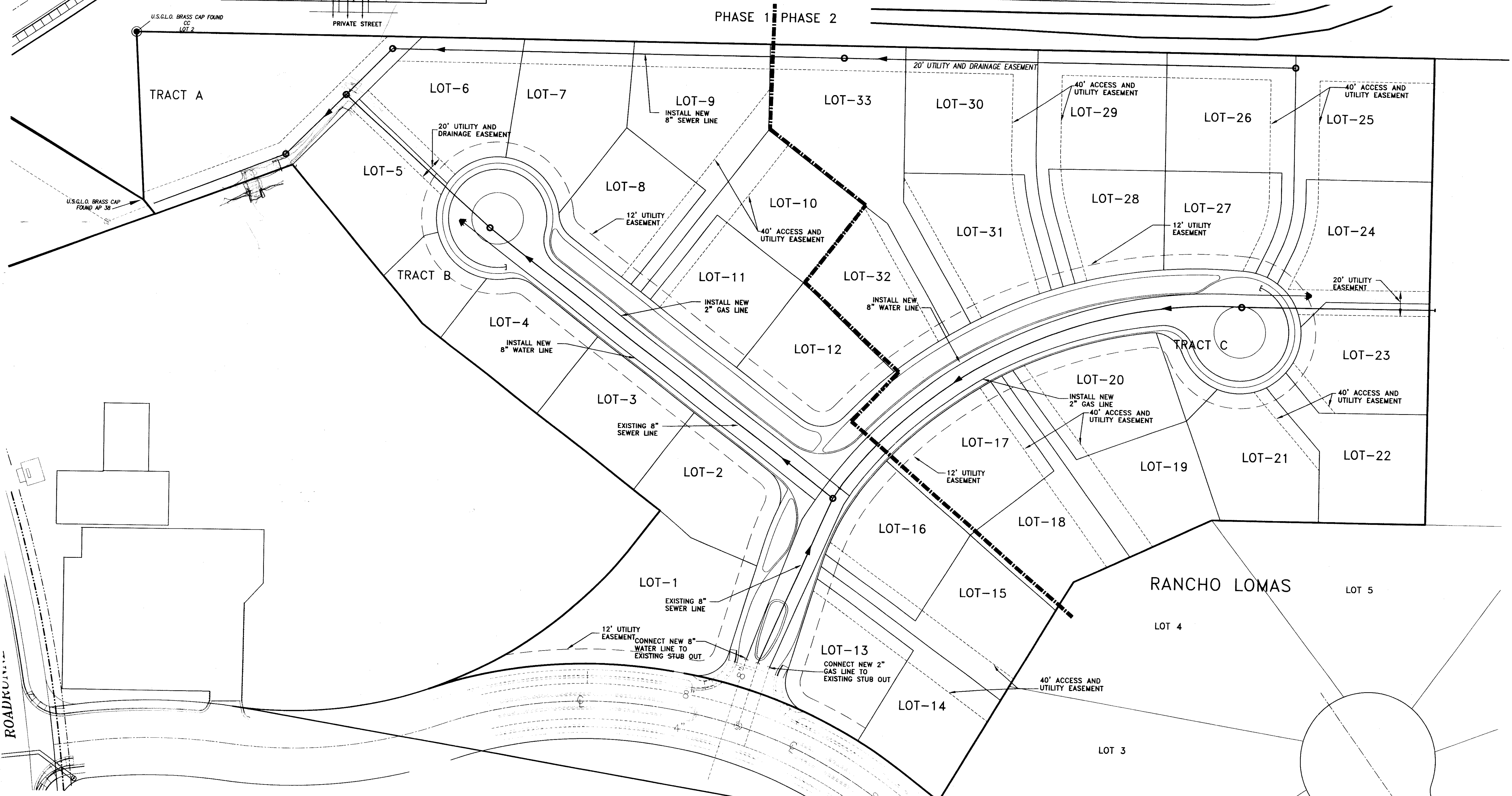
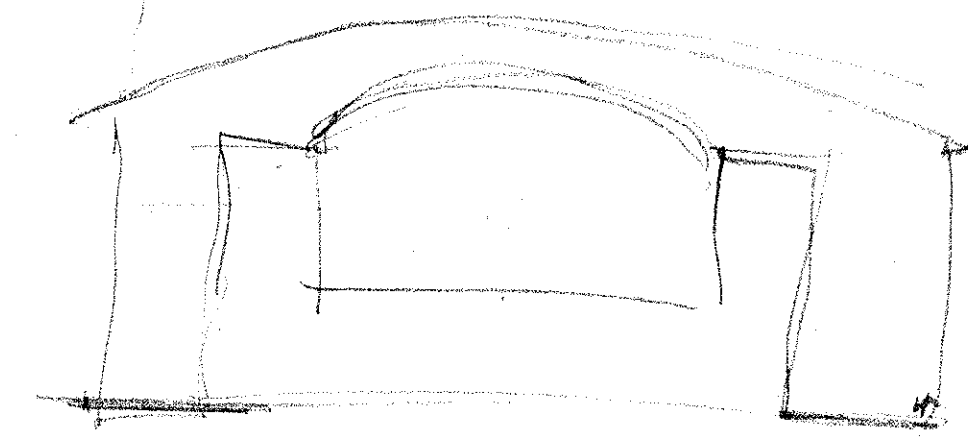
Tue Apr 22 09:15:27 2003



SHARED ACCESS UTILITY LAYOUT  
N.T.S.



TYPICAL END OF CUL-DE-SAC EASEMENT  
N.T.S.

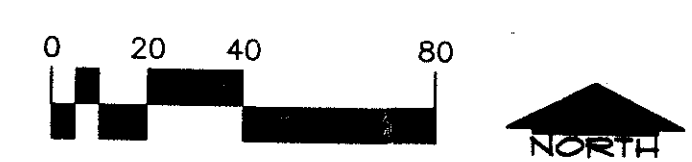


PUD SUBMITTAL  
**POCO LOMAS**  
 PREPARED FOR  
 PARCEL ONE, LLC  
 LAS CRUCES  
 NEW MEXICO

DATE	PHASE
4/22/03	PUD SUBMITTAL

**denton ventures, inc.**  
 architecture • planning  
 2480 roadrunner parkway  
 los cruces, nm 88011  
 office 505.525.0241  
 fax 505.525.9405  
 email dvi@zianet.com

SHEET  
**5**  
 D936UTIL



**MASTER UTILITY PLAN**  
 SCALE 1" = 40'-0"